

Modular detention system mitigates future flooding

Project: Highton Retirement Village

Location: Highton, VIC

Master Precaster: Rocla

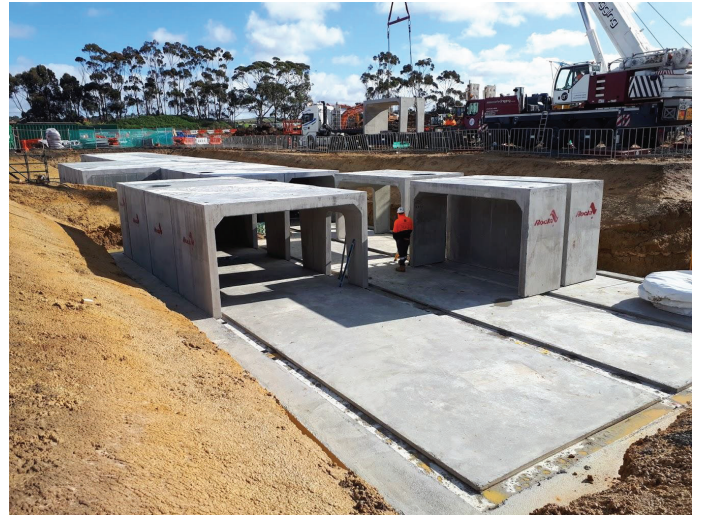
Client: Ryman Healthcare

National Precast Master Precaster Rocla has provided precast concrete elements for a 700kl modular stormwater system for the Highton Retirement Village in Highton, Geelong. The Village is one of Ryman Healthcare's latest additions to its retirement living portfolio.

Surrounded by lush greenery and tranquil views, residents will enjoy privacy and a sense of peace in their new living spaces. The Village is perfectly positioned to the nearby Highton Shopping Centre Precinct, with multiple amenities including a café, open gardens and bowling greens.

The on site detention (OSD) system was required as a buffer storage to attenuate flow from peak rainfall events to mitigate any potential flooding of downstream properties. The system ensures that discharge of stormwater leaving the site does not exceed those of pre-development levels.

Rocla worked with the client from design stage right through to manufacture and delivery to a very tight timeline. With the additional hurdles of bad weather, COVID-19 and being delivered from Wodonga, logistics required careful planning and co-ordination. Then there was an additional challenge of only one truck being able to get onto the site at a time.





Multiple Rocla departments combined to deliver the modules over four consecutive days. They worked together to carefully plan and execute the deliveries to ensure that each component was delivered in the correct order and on time.

Feedback from the customer has been extremely positive, to the extent that Ryman Healthcare has already approached Rocla about the next similar project.

