



Workplace Health & Safety

February 2018

In this edition...

- [State news](#)
- [National news](#)
- [International news](#)

State news

NSW: Uncontrolled movement of vehicles: safety alert

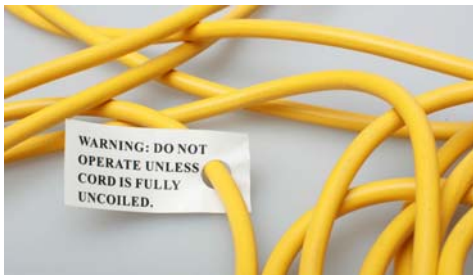
Each year, the uncontrolled movement of vehicles causes serious and fatal injuries. This SafeWork NSW alert highlights general information, contributing factors and required action for operators and management.

[Read more](#)

5 December 2017

Uncontrolled Vehicles

Issued by Safe Work NSW



SA: Managing electrical safety—what are your obligations?

How often do you have your electrical equipment inspected and tested? Follow SafeWork SA's guide to understand your obligations.

[Read more](#)

SA: Stream free WHS videos with SafeWork SA's online library

Access educational videos on a range of topics, including hazards, industries, management, safety management and workers.

[Read more](#)



QLD: Height safety company fined \$15,000 after workplace fall

A worker fell six metres from a building roof and sustained head and spinal injuries, resulting in permanent paraplegia.

[Read more](#)

QLD: Understanding the risks of EWP

WorkCover QLD has released a safety alert detailing the dangers and recommended controls for EWPs. The alert comes after a worker was crushed between the basket and roof when an EWP became caught, causing two wheels to lift off the ground.

[Read more](#)



QLD: Geotechnical advice provider fined after breaching s46

The company was fined \$8,000 after lack of engineered ground supports caused two wall collapses. It is the first prosecution under s46 of the *Workplace Health and Safety Act 2011* - failing to consult with other duty holders.

[Read more](#)

QLD: New requirements for Health and Safety Representatives (HSR's)

A framework for HSR's to actively assist in keeping their workplaces safe has already been established in the *Work Health and Safety Act 2011*, but new specific requirements have been put in place.

[Read more](#)



QLD: Mandatory labour hire licensing scheme to start soon

Labour hire workers will be protected under a new scheme that commences 16th April 2018.

[Read more](#)

VIC: Crane incident leads to foot amputation

A silo manufacturing company in Rochester has been fined \$30,000 after a crane ran over an employee's leg, crushing his foot and fracturing his hip socket.

[Read more](#)



National news



How last year's legislative developments will impact you in 2018

Health & Safety Handbook Editor-in-Chief, Michael Selinger, reviews 2017's key changes. From non-conforming building products to new international standards, here is everything you need to know.

[Read more](#)

It's cool to stay cool—identifying the risks of heat stress

Here's an online tool to assist you in identifying and assessing the risks of heat stress.

[Read more](#)



Are your young workers up to scratch?

A reminder to look out for young workers starting their first jobs—they must be properly inducted, trained and supervised.

[Read more](#)

The silent killer

A study has revealed that suicide rates in the construction industry are 71 per cent higher than that of other employed men. Even though stigma around suicide is changing, workers with mental health issues often fail to seek help.

[Read more](#)



Have your insert anchors been installed correctly?

Insert anchors provide a quick and effective anchorage system, but incorrect installation can compromise their safety and effectiveness. Here's what you need to know about correct installation.

[Read more](#)

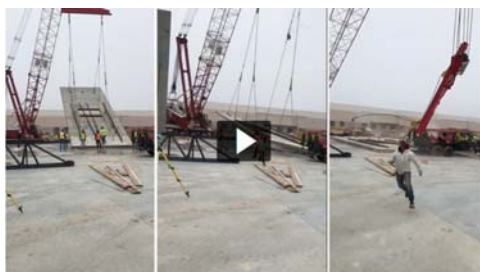
International news

Incorrect construction joint causes unsafe flooring (NLD)

Smooth precast slabs manufactured for the Eindhoven Airport parking garage prevented an insitu topping from binding, causing a collapse.

[Read more](#)





Workers run for their lives as crane collapses (US)

Nearly a dozen workers escaped with their lives after a crane lifting a precast wall panel collapsed at a construction site in Austin, Texas.

[Read more](#)

Construction company owner facing manslaughter charges (US)

The owner of a Seattle construction company has been charged with manslaughter following the death of an employee in a collapsed trench.

[Read more](#)





BUILDING A SUSTAINABLE AUSTRALIA

www.nationalprecast.com.au
 Suite 2, 13 Brighton Road,
 Glenelg SA 5045
 P: (08) 8294 0833



NATIONAL PRECAST
 CONCRETE ASSOCIATION AUSTRALIA

Copyright © 2017 National Precast Concrete Association Australia. All rights reserved.

[Facebook](#) • [LinkedIn](#)

Copyright © 2015 National Precast Concrete Association Australia. All rights reserved.

[Subscribe](#)