



Finishes - New dimensions with Form-liners and Staining

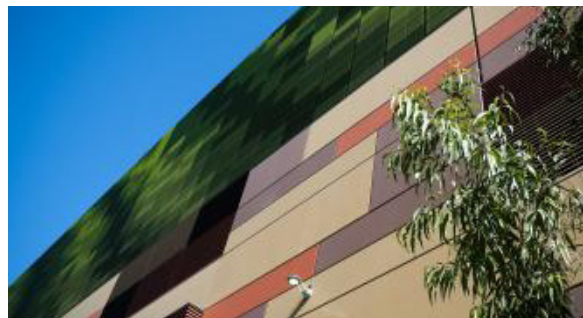
The design and construction industry is starting to take notice of the significant benefits realised when using precast that is made using form-liners and then stained. Builders are enjoying the more than fifty percent cost savings as well as increased turnaround time, whereby panels can be supplied three times faster than the traditional alternatives. And architects and designers prefer the increased flexibility and more vivid colours which can be achieved.

In 2006 National Precast Member Nawkaw introduced new technology for colouring concrete into the Australian precast industry. Having already been used overseas for many years, stained precast concrete provides the Australian design and construction market with an alternative to using colour pigments in the concrete mix.

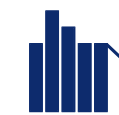
A much more durable solution than paint, the stain penetrates into the surface of the concrete. Usually guaranteed on vertical surfaces for 25 years before it starts to fade, stained precast concrete requires minimal ongoing maintenance and cleaning over its life.

Staining precast concrete offers an unlimited range of colours, and presents uniformly on the concrete surface with no variation in shade. From opaque to translucent results, to even metallic finishes, a myriad of effects can be achieved. Some stained precast projects produced by National Precast members include:

- *Top Ryde Shopping Centre*
- *University of Canberra Student Residences*
- *The Kerrie Murphy Building (International Grammar School Sydney).*



Top Ryde Shopping Centre



NATIONAL PRECAST
CONCRETE ASSOCIATION AUSTRALIA
making precast easy



University of Canberra Student Residences (photographer: Ben Wrigley)



The Kerrie Murphy Building (photographer: Michael Nicholson)

Stain can be applied to precast concrete in the precast factory, making installation on site extremely fast.

When combined with either standard or custom made form-liners, a myriad of coloured patterns and textures can be achieved.

All National Precast Members can use form-liners, which are supplied by either Reckli or ITW.

Nawkaw's specialty is in matching the colour requirements of any project by custom-blending and hand-applying their products to the surface of the moulded, cured precast. The result can mimic traditional brickwork, blockwork, stone work, slate, sandstone, or timber.



Using the stained formliner combination is less than half the cost of the traditional method of casting slips of stone and snaps of bricks into the precast surface, and does not limit the architect to only those colours of masonry units which are available.



Melbourne's Mt Martha bridge was specified with a 'cream splitface architectural CMU blockwork finish'. Precaster Humes realised that there were significant time and cost savings in casting the bridge sections with a blockwork relief formliner in grey concrete, then staining the moulded surface. The result is one that is indistinguishable from the traditional blockwork that was specified.

For architects and designers, the options are exciting. Using form-liners opens up a world of patterns and textures. The application of Nawkaw's coloured emulsions and stains results in design possibilities which are now only limited by the imagination.