



Workplace Health & Safety

February 2016

In this issue...

- [National news](#)
 - [State news](#)
 - [International news](#)
-

Ten mistakes employers make with workers' compensation

Workers' compensation is generally a company's largest insurance premium, it is an extremely legislated and emotional insurance with different legislations, regulations and requirements in each state.

Where most businesses engage an insurance broker to assist them with managing the risk of their general insurance program and to prevent things from going wrong, they often only seek advice from workers' compensation specialists after something has already gone wrong.

[Click here](#) to see ten of the more common mistakes employers make in the management of their workers' compensation, mistakes that if you can avoid will assist in mitigating penalties and increases in premium.

NP discount on Aegis workers' compensation services

Do you need help with the management of your Workers' Compensation? NP has negotiated a discount for members on the services provided by the BJS Insurance Group's Specialist Workers' Compensation Division, Aegis Risk Management Services. For detail relating to this offer [Click here](#).

How to manage fatalities and serious injuries in the workplace

Aegis Risk Management Services will be holding a free breakfast seminar in Melbourne in April to assist employers in understanding how to manage a fatality or serious injury. If you would like to receive further information about this event, email Simon Booth from BJS Aegis at Simon.booth@aegisrms.com.au.

National News



- [The Work-related Traumatic Injury Fatalities, Australia 2014 report](#)
- [The Cost of Work-related Injury and Illness for Australian Employers, Workers and the Community: 2012-13 report](#)
- [The Comparative Performance Monitoring report.](#)
- [Podcast - Applying good work design in construction's complex supply chains](#)
- [Podcast - Good work through effective leadership](#)
- [Podcast - Demystifying return-to-work coordination](#)
- [Structural Safety - Lifting an unbalanced load](#)

- [Five infographics that reveal why good safety practice in your workplace is so important](#)
- [Do you have a sun protection policy and UV risk control policy?](#)

State News

Western Australia



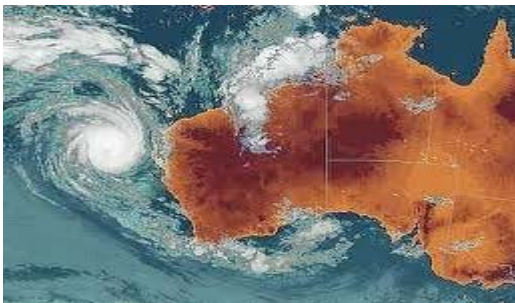
[Gateway WA project wins top Safety Award - congrats to Delta](#)



[Scaffolding fatality on Perth building site](#)



[Concrete slab crushes two Perth workers](#)



[Cyclone plans in place?](#)



[Falsified high risk work licences](#)

Queensland



Work Health & Safety laws amended



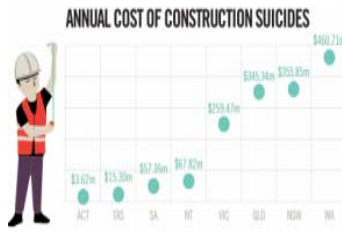
Forgetfulness points to lack of communication and \$40k fine



Raising awareness of construction site safety



Construction work health forum: 1 March \$99



Construction suicide has widespread costs



One quarter of deaths involve heights

Victoria



Victorian fatalities highlight focus on safety



Neutral Start Controls for Plant and Vehicles

New South Wales



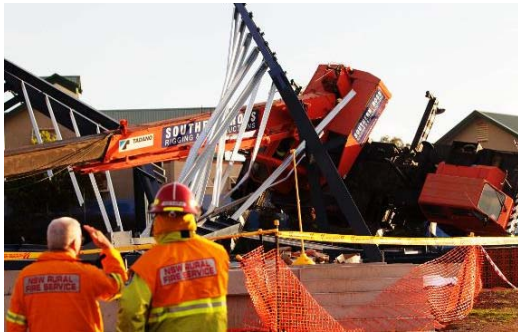
Failed load restraint blamed for death (NSW)



WorkCover NSW splits in three



Safety reminders during rain and wind



[Fines from steel structure collapse](#)



[Watch for fraudulent crane licence holders](#)

South Australia



[Resources to ensure worker psych health](#)



[Watch for heat stress symptoms](#)

Australian Capital Territory



[Notifications ease for workers' comp insurance](#)



[Safe work at heights - new resources](#)

Northern Territory



[Safety alert: risk of unauthorised persons in work area](#)

International News



[Deadliest crane collapse in history at the Grand Mosque in Mecca, killing 111 people and injuring a further 394 \(Saudi Arabia\)](#)



[Worker crushed to death under a slab of concrete \(Philippines\)](#)



[Worker at Boucherville cement plant killed & 2 injured in condo accident \(Canada\)](#)



[Worker killed by falling concrete in Madison County \(USA\)](#)

Phone: (08) 8294 0833 • Email: info@nationalprecast.com.au
Suite 2, 13 Brighton Road, Glenelg SA 5045

[Facebook](#) • [LinkedIn](#)

Copyright © 2015 National Precast Concrete Association Australia. All rights reserved.

[Unsubscribe](#)