

Bellevue Hill Public School

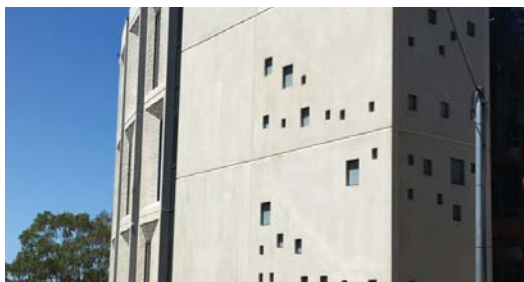


SYDNEY'S SCHOOL FOR THE FUTURE

A school should inspire, excite and encourage learning. That's exactly what a new four-storey precast building at Sydney's Bellevue Hill Public School will do as it doubles its capacity.

Precaster initiative reduces project cost

The 'window' wall panels were converted from their original single-storey height to double-storey, which reduced the number of panels and installation time. The larger wall panels were originally designed to be erected as cladding but were changed to be structural wall panels, which saved formwork on site.



BELLEVUE HILL PUBLIC SCHOOL

Project Value
\$1.2 million

Location
Bellevue Hill, NSW

Precaster
Precast Concrete Products

Builder
Richard Crookes Constructions

Architect
Group GSA Architects

Engineer
Northrop Sydney



TECH SPECS

Products supplied

36 architectural 'window' wall panels
& 16 architectural wall panels

Finishes

Off-white off-form

Design

Single-storey panels converted to double-storey panels; cladding panels converted to loadbearing panels.

Transported from Brisbane to Sydney

With the Sydney market booming and a limited number of quality precasters, panels for the project were transported almost 1000 kilometres from the factory in Brisbane to the school in Sydney. The panels were delivered to site two at a time on special transport frames.

Colour consistency critical

According to Colin Ginger, Manager of Precast Concrete Products, "Achieving a high quality off-white finish takes significant expertise and experience to achieve colour consistency. It's a complicated process that really demonstrates the skill of a good architectural precaster". With a visually stunning facade, the result is modern, stylish and eye-catching.



Visit Precast Concrete Products at
www.precast.com.au, for more information and
advice on your next project.